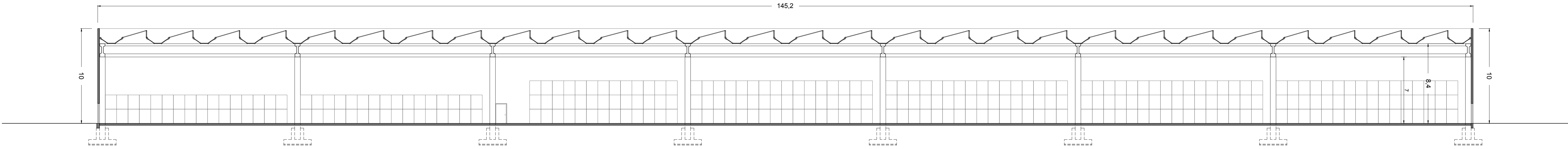
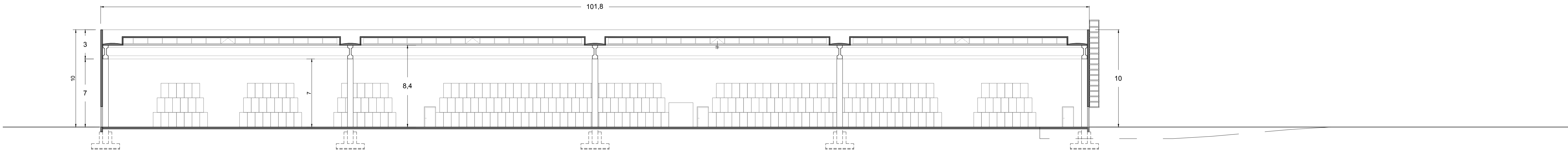


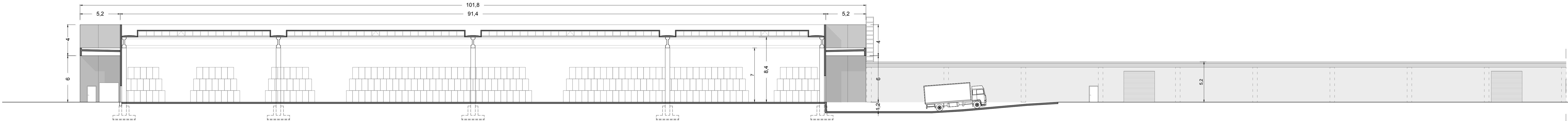
SEZIONE AA



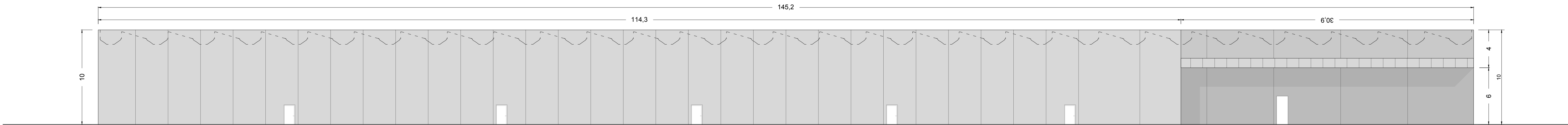
SEZIONE BB



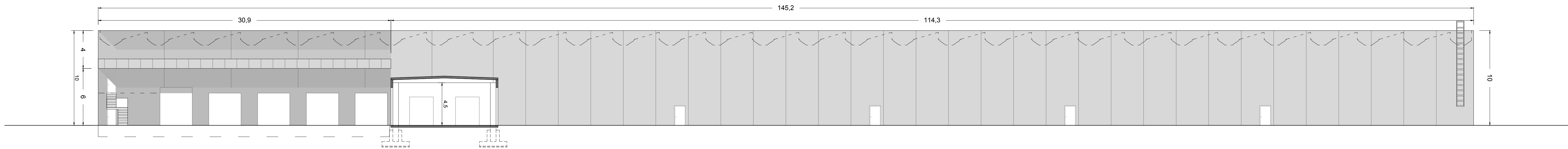
SEZIONE CC



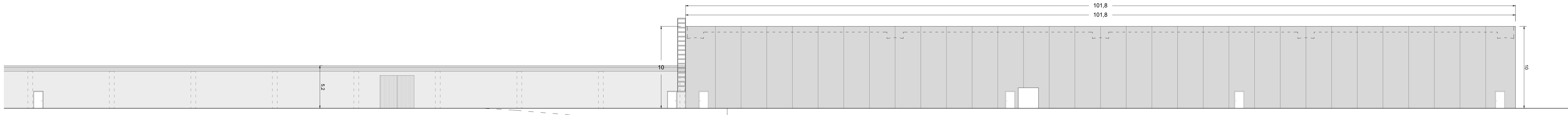
SEZIONE DD



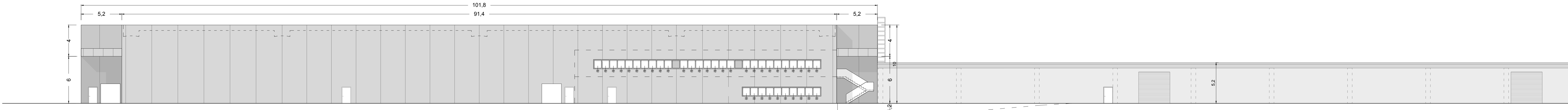
FACCIATA OVEST



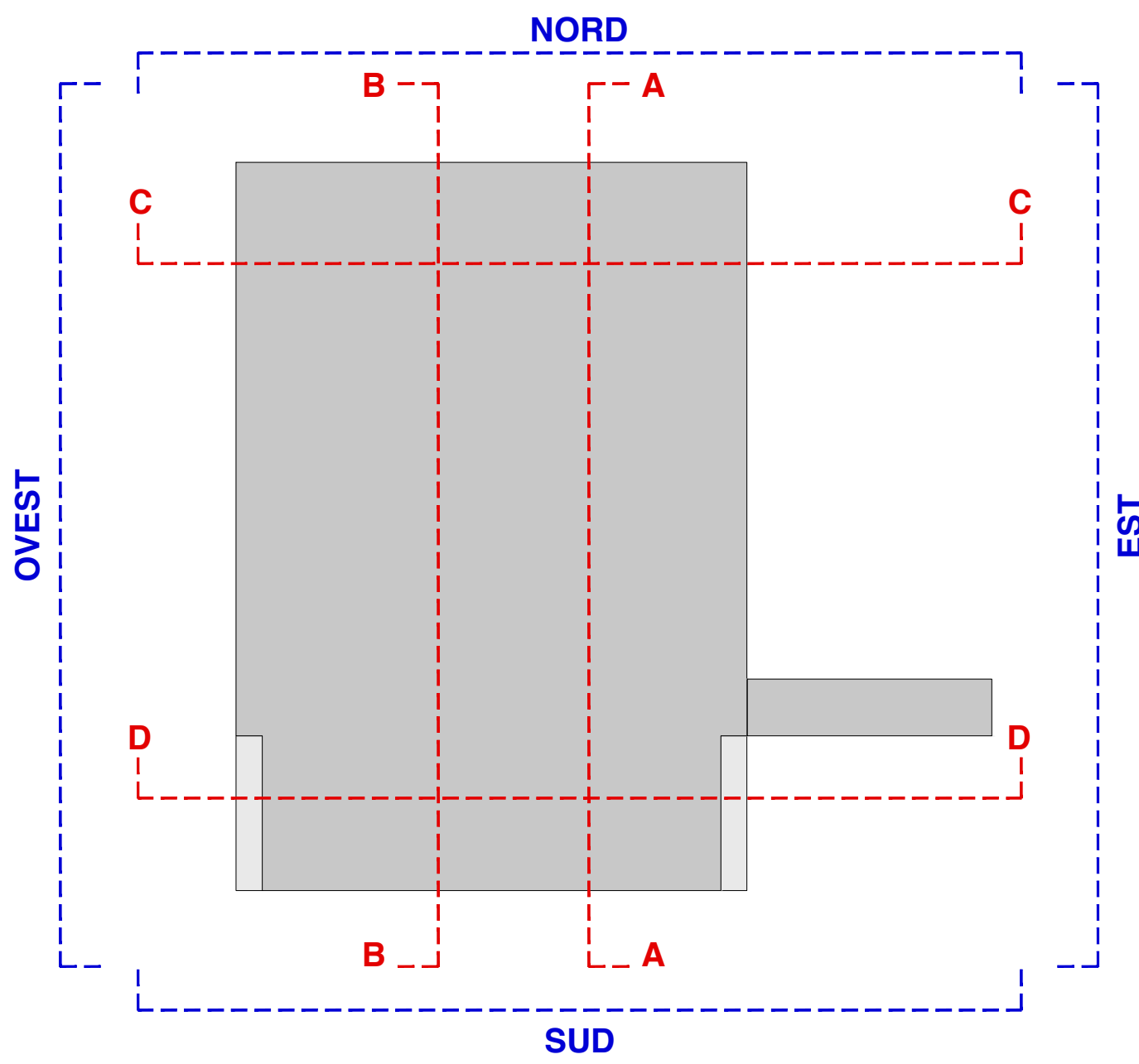
FACCIATA EST



FACCIATA NORD



FACCIATA SUD

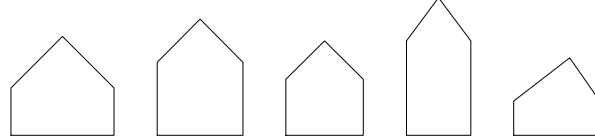


Comittente



Gruppo Fini S.p.A. è socio unico
Via Confine n.1583-41017 Ravarino (MO)
Anm: Via Albareto n.211 - 41122 Modena

Progettista



hus
Via Sant'Agnesa 12, 20123 Milano (MI)
Via Adige 1, 22075 Villa Guardia (CO)
www.hus.it

Geologo



GEO - GROUP SRL
Via per Modena, 12
41051 Castelnuovo Rangone

Termotecnico



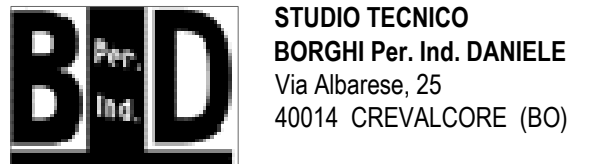
STUDIO TERMOTECNICO DVR SRL
Via per Concordia, 30
41037 Mirandola (MO)

Antincendio



ZECCHINI & ASSOCIATI SRL
Via Basilicata, 4
41049 Sassuolo (MO)

Elettromeccanico



Consulenza idraulica



Legenda

Comune



Comune di Ravarino
Provincia di Modena

**Procedimento Unico ai sensi
dell'Art. 53 L.R. 24/2017**
Ampliamento stabilimento Fini Group Spa

Titolo Disegno

**PROGETTO FABBRICATO
- Prospetti e Sezioni**

Numero Disegno

ARC 07

Data | 26.02.2026

Rev | 00

Redatto | PK

Verifica | ET

Scala | 1/1000

Formato | A0

